

TECHNICAL MANUAL

**ORGANIZATIONAL, DIRECT SUPPORT, AND  
GENERAL SUPPORT MAINTENANCE  
REPAIR PARTS AND SPECIAL TOOLS LIST**

**COMPRESSOR, AIR RECIPROCATING,  
ELECTRIC MOTOR DRIVEN,  
15 CFM AT 175 PSI  
NSN 4310-01-120-7669**

Approved for public release; distribution is unlimited.

\*This manual supersedes TM 5-4310-373-24P, 6 April 1984, including all changes,

---

HEADQUARTERS, DEPARTMENT OF THE ARMY

28 AUGUST 1989



TECHNICAL MANUAL

No. 5-4310-373-24P

HEADQUARTERS  
DEPARTMENT OF THE ARMY  
WASHINGTON, D.C., 28 August 1989

**Organizational, Direct Support, and General Support Maintenance  
Repair Parts and Special Tools List  
for  
COMPRESSOR, AIR RECIPROCATING  
ELECTRIC MOTOR DRIVEN  
15 CFM AT 175 PSI  
NSN 4310-01-120-7669**

Current as of 3 May 1989

REPORTING OF ERRORS AND RECOMMENDING IMPROVEMENTS

You can help improve this manual. If you find any mistake or if you know of a way to improve the procedures, please let us know. Mail your letter, DA Form 2028 (Recommended Changes to Publications and Blank Forms) or DA Form 2028-2 located in the back of this manual direct to: Commander, U.S. Army Troop Support Command, ATTN: AMSTR-MCTS, 4300 Goodfellow Blvd., St. Louis, MO 63120-1798. A reply will be furnished directly to you.

Approved for public release; distribution is unlimited.

TABLE OF CONTENTS

		Page	Illust/ Figure
Section I.	Introduction . . . . .	1	
Section II.	Repair Parts List		
Group 01	Motor Controls		
	Electric Motor Controls . . . . .	1-1	1
Group 02	Compressor		
	Compressor Drive . . . . .	2-1	2
Group 03	Compressor Assembly		
	Compressor Assembly - Cylinder and Valves . . . . .	3-1	3
	Compressor Assembly - Crankshaft and Pistons . . . . .	4-1	4
Group 04	Electric Motor		
	Electric Motor . . . . .	5-1	5
Group 05	Air Receiver System		
	Air Receiver System . . . . .	6-1	6
Group 06	Air Discharge System		
	Air Discharge System . . . . .	7-1	7
Section III.	Special Tools List (Not Applicable)		
Section IV.	Cross Reference Index . . . . .	I-1	
	National Stock Number Index . . . . .	I-1	
	Part Number Index . . . . .	I-2	
	Figure and Item Number Index . . . . .	I-3	

\*This manual supersedes TM 5-4310-373-24P, 6 April 1984, including all changes.



Organizational, Direct Support, and General Support Maintenance  
Repair Parts and Special Tools List

COMPRESSOR, AIR RECIPROCATING, ELECTRIC MOTOR DRIVEN,  
15 CFM AT 175 PSI  
NSN 4310-01-120-7669

SECTION I. INTRODUCTION

1. **SCOPE.** This RPSTL lists and authorizes spares and repair parts; special tools; special test, measurement, and diagnostic equipment (TMDE); and other special support equipment required for performance organizational, direct support, general support of Compressor, Air Reciprocating. It authorizes the requisitioning, issue, and disposition of spares, repair parts and special tools as indicated by the source, maintenance and recoverability (SMR) codes.

2. **GENERAL.** In addition to this section, Introduction, this Repair Parts and Special Tools List is divided into the following sections:

a. **Section II. Repair Parts List.** A list of spares and repair parts authorized by this RPSTL for use in the performance of maintenance. The list also includes parts which must be removed for replacement of the authorized parts. Parts lists are composed of functional groups in ascending alphanumeric sequence, with the parts in each group listed in ascending figure and item number sequence. Bulk materials are listed in item name sequence. Repair parts kits are listed separately in their own functional group within Section II. Repair parts for repairable special tools are also listed in this section. Items listed are shown on the associated illustration(s)/figure(s).

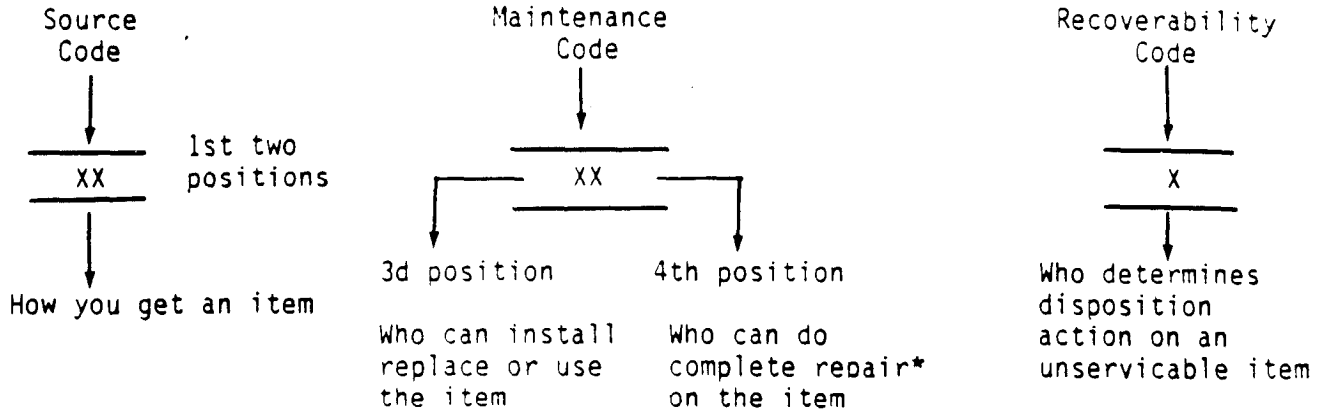
b. **Section III. Special Tools List.** A list of special tools, special TMDE, and other special support equipment authorized by this RPSTL (as indicated by Basis of Issue (BOI) information in DESCRIPTION AND USABLE ON CODE column) for the performance of maintenance.

c. **Section IV. Cross-references Indexes.** A list, in National Item Identification Number (NIIN) sequence, of all National stock numbered items appearing in the listing, followed by a list in alphanumeric sequence of all part numbers appearing in the listings. National stock numbers and part numbers are cross-referenced to each illustration figure and item number appearance. The figure and item number index lists figure and item number in alphanumeric sequence and cross-references NSN, FSCM and part number.

3. **EXPLANATION OF COLUMNS (SECTIONS II AND III).**

a. **ITEM NO. (Column (1)).** Indicates the number used to identify items called out in the illustration.

b. SMR Code (Column (2)). The Source, Maintenance, and Recoverability (SMR) code is a 5-position code containing supply/requisitioning information, maintenance category authorization criteria, and disposition instruction, as shown in the following breakout:



\*Complete Repair: Maintenance capacity, capability, and authority to perform all corrective maintenance tasks of the "Repair" function in a use/user environment in order to restore serviceability to a failed item.

(1) Source Code. The source code tells you how to get an item needed for maintenance, repair, or overhaul of an end item/equipment. Explanations of source codes follows:

Code	Explanation
PA PB PC** PD PE PF PG	Stocked items; use the applicable NSN to request/requisition items with these source codes. They are authorized to the category indicated by the code entered in the 3d position of the SMR code.  **NOTE: Items coded PC are subject to deterioration.
KD KF KB	Items with these codes are not to be requested/requisitioned individually. They are part of a kit which is authorized to the maintenance category indicated in the 3d position of the SMR code. The complete kit must be requisitioned and applied.
MO--(Made at org. AVUM Level) MF--(Made at DS/ AVUM Level) MH--(Made at GS Level) ML--Made at Specialized Repair Activity (SRA) MD--(Made at Depot)	Explanation  Items with these codes are not to be requested/requisitioned individually. They must be made from bulk material which is identified by the part number in the DESCRIPTION and USABLE ON CODE (UOC) column and listed in the Bulk Material group of the repair parts list in this RPSTL. If the item is authorized to you by the 3d position code of the SMR code, but the source code indicates it is made at a higher level, order the item from the higher level of maintenance.

Explanation

AO--(Assembled by org/AYUM Level)  
 AF--(Assembled by DS/AVIM Level)  
 AH--(Assembled by GS Category)  
 AL--(Assembled by SRA)  
 AD--(Assembled by Depot)

Items with these codes are not to be requested/requisitioned individually. The parts that make up the assembled item must be requisitioned or fabricated and assembled at the level of maintenance indicated by the source code. If the 3d position code of the SMR code authorizes you to replace the item, but the source code indicates the items are assembled at a higher level, order the item from the higher level of maintenance.

Explanation

- XA--Do not requisition an "XA"-coded item. Order its next higher assembly. (Also, refer to the NOTE below.)
- XB--If an "XB" item is not available from salvage, order it using the FSCM and part number given.
- XC--Installation drawing, diagram, instruction sheet, field service drawing, that is identified by manufacturer's part number.
- XD--Item is not stocked. Order an "XD"-coded item through normal supply channels using the FSCM and part number given, if no NSN is available.

NOTE

Cannibalization or controlled exchange, when authorized, may be used as a source of supply for items with the above source codes, except for those source coded "XA" or those aircraft support items restricted by requirements of AR 750-1.

(2) **Maintenance Code.** Maintenance codes tells you the level(s) of maintenance authorized to USE and REPAIR support items. The maintenance codes are entered in the third and fourth positions of the SMR code as follows:

(a) The maintenance code entered in the third position tells you the lowest maintenance level authorized to remove, replace, and use an item. The maintenance code entered in the third position will indicate authorization to one of the following levels of maintenance.

Code	Application/Explanation
C	--Crew or operator maintenance done within organizational or aviation unit maintenance.
0	--Organizational or aviation unit category can remove, replace, and use the item.
F	--Direct support or aviation intermediate level can remove, replace, and use the item.

- H --General support level can remove, replace, and use the item.
- L --Specialized repair activity can remove, replace, and use the item.
- D --Depot level can remove, replace, and use the item.

(b) The maintenance code entered in the fourth position tells whether or not the item is to be repaired and identifies the lowest maintenance level with the capability to do complete repair (i.e., perform all authorized repair functions.) NOTE: Some limited repair may be done on the item at a lower level of maintenance, if authorized by the Maintenance Allocation Chart (MAC) and SMR codes. This position will contain one of the following maintenance codes.

Code	Application/Explanation
0	--Organizational or (aviation unit) is the lowest level that can do complete repair of the item.
F	--Direct support or aviation intermediate is the lowest level that can do complete repair of the item.
H	--General Support is the lowest level that can do complete repair of the item.
L	--Specialized repair activity is the lowest level that can do complete repair of the item.
D	--Depot is the lowest level that can do complete repair of the item.
Z	--Nonreparable. No repair is authorized.
B	--No repair is authorized. (No parts or special tools are authorized for the maintenance of a "B" coded item). However, the item may be reconditioned by adjusting, lubricating, etc., at the user level.

**(3) Recoverability Code.** Recoverability codes are assigned to item to indicate the disposition action on unserviceable-items. The recoverability code is entered in the fifth position of the SMR Code as follows:

Recoverability Codes	Application/Explanation
Z	--Nonreparable item. When unserviceable, condemn and dispose of the item at the level of maintenance shown in 3d position of SMR Code.



Recoverability Codes	Application/Explanation
0	--Reparable item. When uneconomically repairable, condemn and dispose of the item at organizational or aviation unit level.
F	--Reparable item. When uneconomically repairable, condemn and dispose of the item at the direct support or aviation intermediate level.
H	--Reparable item. When uneconomically repairable, condemn and dispose of the item at the general support level.
D	--Reparable item. When beyond lower level repair capability, return to depot. Condemnation and disposal of item not authorized below depot level.
L	--Reparable item. Condemnation and disposal not authorized below specialized repair activity (SRA).
A	--Item requires special handling or condemnation procedures because of specific reasons (e.g., precious metal content, high dollar value, critical material, or hazardous material). Refer to appropriate manuals/directives for specific instructions.

c. **FSCM (Column (3)).** The Federal Supply Code for Manufacturer (FSCM) is a 5-digit numeric code which is used to identify the manufacturer, distributor, or Government agency, etc., that supplies the item.

d. **PART NUMBER (Column (4)).** Indicates the primary number used by the manufacturer, (individual, company, firm, corporation, or Government activity), which controls the design and characteristics of the item by means of its engineering drawings, specifications standards, and inspection requirements to identify an item or range of items.

NOTE

When you use an NSN to requisition an item, the item you receive may have a different part number from the part ordered.

e. **DESCRIPTION AND USABLE ON CODE (UOC) (Column (5)).** This column includes the following information:

- (1) The Federal item name and, when required, a minimum description to identify the item.
- (2) The physical security classification of the item is indicated by the parenthetical entry, e.g., Phy Sec C1 - Confidential, Phy Sec C1 (S) - Secret, Phy Sec C1 (T) - Top Secret.

- (3) Items that are included in kits and sets are listed below the name of the kit or set.
- (4) Spare/repair parts that make up an assembled item are listed immediately following the assembled item line entry.
- (5) Part numbers for bulk materials are referenced in this column in the line item entry for the item to be manufactured/fabricated.
- (6) When the item is not used with all serial numbers of the same model, the effective serial numbers are shown on the last line(s) of the description (before UOC).
- (7) The usable on code, when applicable (see paragraph 5, Special Information).
- (8) In the Special Tools List section, the basis of issue (BOI) appears as the last line(s) in the entry for each special tool, special TMDE, and other special support equipment. When density of equipments supported exceeds density spread indicated in the basis of issue, the total authorization is increased proportionately.
- (9) The statement "END OF FIGURE" appears just below the last item description in Column 5 for a given figure in both Section II and Section III.
- (10) The indenture, shown as dots appearing before the repair part, indicates that the item is a repair part of the next higher assembly.

**f. QTY (Column (6)).** The QTY (quantity per figure column) indicates the quantity of the item used in the breakout shown on the illustration figure, which is prepared for a functional group, subfunctional group, or an assembly. A "V" appearing in this column in lieu of a quantity indicates that the quantity is variable and may vary from application to application.

#### 4. EXPLANATION OF COLUMNS (SECTION IV).

##### a. NATIONAL STOCK NUMBER (NSN) INDEX.

- (1) **STOCK NUMBER column.** This column lists the NSN by National item identification number

(NIIN) sequence. The NIIN consists of the last nine digits of the  

$$\text{NSN} \quad \text{NSN}$$

$$\text{NSN, i.e. } \frac{(5305-01-574-1467)}{\text{NIIN}}.$$

When using this column to locate an item, ignore the first 4 digits of the NSN. However, the complete NSN should be used when ordering items by stock number.

- (2) **FIG. column.** This column lists the number of the figure where the item is identified/located. The figures are in numerical order in Section II and Section III.

- (3) **ITEM column.** The item number identifies the item associated with the figure listed in the adjacent FIG. column. This item is also identified by the NSN listed on the same line.

**b. PART NUMBER INDEX.** Part numbers in this index are listed by part number in ascending alphanumeric sequence (i.e., vertical arrangement of letter and number combination which places the first letter or digit of each group in order A through Z, followed by the numbers 0 through 9 and each following letter or digit in like order).

- (1) **FSCM column.** The Federal Supply Code for Manufacturer (FSCM) is a 5-digit numeric code used to identify the manufacturer, distributor, or Government agency, etc., that supplies the item.
- (2) **PART NUMBER column.** Indicates the primary number used by the manufacturer (individual, firm, corporation, or Government activity), which controls the design and characteristics of the item by means of its engineering drawings, specifications standards, and inspection requirements to identify an item or range of items.
- (3) **STOCK NUMBER column.** This column lists the NSN for the associated part number and manufacturer identified in the PART NUMBER and FSCM columns to the left.
- (4) **FIG. column.** This column lists the number of the figure where the item is identified/located in Sections II and III.
- (5) **ITEM column.** The item number is that number assigned to the item as it appears in the figure referenced in adjacent figure number column.

**c. FIGURE AND ITEM NUMBER INDEX.**

- (1) **FIG. column.** This column lists the number of the figure where the item is identified/located in Section II and III.
- (2) **ITEM column.** The item number is that number assigned to the item as it appears in the figure referenced in the adjacent figure number column.
- (3) **STOCK NUMBER column.** This column lists the NSN for the item.
- (4) **FSCM column.** The Federal Supply Code for Manufacturer (FSCM) is a 5-digit numeric code used to identify the manufacturer, distributor, or Government agency, etc., that supplies the item.
- (5) **PART NUMBER column.** Indicates the primary number used by the manufacturer (individual, firm, corporation, or Government activity), which controls the design and characteristics of the item by means of its engineering drawings, specifications standards, and inspection requirements to identify an item or range of items.

**5. SPECIAL INFORMATION.**

**a. USABLE ON CODE.** The usable on code appears in the lower left corner of the Description column heading. Usable on codes are shown as "UOC: . . . ." in the Description Column (justified left) on the last line applicable item description/nomenclature. Uncoded items are applicable to all models.

**b. ASSOCIATED PUBLICATIONS.** The publications listed below pertains to the Compressor, Air Reciprocating and its components.

Publication	Short Title
TM 5-3610-252-14	Compressor, Air Reciprocating, Electric Motor Driven

**6. HOW TO LOCATE REPAIR PARTS.**

**a. When National Stock Number or Part Number is NOT Known.**

- (1) **First.** Using the table of contents, determine the assembly group for subassembly group to which the item belongs. This is necessary since figures are prepared for assembly groups and subassembly groups, and listings are divided into the same groups.
- (2) **Second.** Find the figure covering the assembly group or subassembly group to which the item belongs.
- (3) **Third.** Identify the item on the figure and note the item number.
- (4) **Fourth.** Refer to the Repair Parts List for the figure to find the part number for the item number noted on the figure.
- (5) **Fifth.** Refer to the Part Number Index to find the NSN, if assigned.

**b. When National Stock Number or Part Number is Known:**

- (1) **First.** Using the Index of National Stock Numbers and Part Numbers, find the pertinent National Stock Number or Part Number. The NSN index is in National Item Identification Number (NIIN) sequence (see 4a(1)). The part numbers in the Part Number index are listed in ascending alphanumeric sequence (see paragraph 4b). Both indexes cross-reference you to the illustration figure and item number of the item you are looking for.
- (2) **Second.** After finding the figure and item number, verify that the item is the one you are looking for, then locate the item number in the repair parts list for the figure.

7. **ABBREVIATIONS.** Abbreviations that are not listed in MIL-STL-12 are listed below.

Abbreviations	Explanation
DEG	Degree(s)
EA	Each
FT	Feet (foot)
GRP	Group
ID	Inside Diameter
IN.	Inch(es)
LG	Long (Length)
MTG	Mounting(s)
NO.	Number(s)
OD	Outside Diameter

6  
7 THRU 19

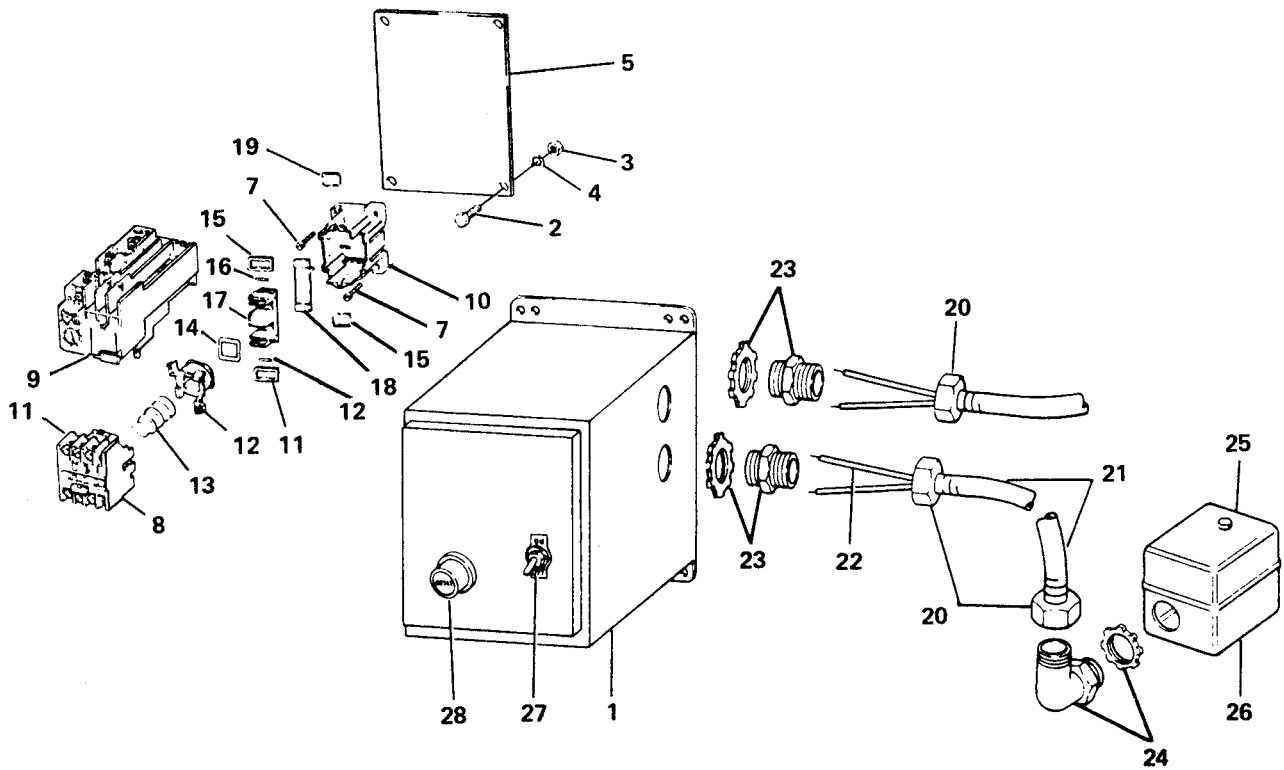


Figure 1. Electric Motor Controls.

SECTION II (1)	SMR (2)	FSCM (3)	TM5-4310-373-24P (4) PART NUMBER	(5) DESCRIPTION AND USABLE ON CODE (UOC)	(6) QTY
GROUP 01 MOTOR CONTROLS					
FIG. 1 ELECTRIC MOTOR CONTROLS					
1	XBOZZ	75523	CA-23A-M12	ENCLOSURE	1
2	PAOZZ	96906	MS90725-34	BOLT, MACHINE	4
3	PAOZZ	96906	MS51967-35	NUT, PLAIN, HEXAGON	4
4	PAOZZ	96906	MS35333-74	WASHER, LOCK	4
5	XBOZZ	04718	1867-1	PLATE, MOUNTING, STARTER	1
6	PB000	52034	CA3-23A-240AC-CT 3-23A-M12	STARTER, MOTOR	1
7	PAOZZ	23826	D25013-001	.SCREW, MACHINE 4 MM DIA, 0.70 .THREAD, 32 MM LONG	2
8	XBOZZ	75523	22.601.211-01	.HOUSING, UPPER WITH CONTACTS	1
9	XBOZZ	75523	CT3-23A	.RELAY, OVERLOAD	1
10	XBOZZ	75523	22.601.411-01	.HOUSING, LOWER	1
11	XBOZZ	75523	CA3-23A-240AC	.SWITCH ASSY, CONTACTOR	1
12	PAOZZ	75523	22.601.304230AC	.COIL, ELECTRICAL	1
13	XBOZZ	75523	22.601.754-01	.SPRING, RETAINING	1
14	XAOZZ	75523	22.601.831-03	.PAD, RUBBER	1
15	XAOZZ	75523	22.601.503-02	.RING, SHADING	2
16	XAOZZ	75523	22.601.833-01	.PIN, DAMPING	2
17	XAOZZ	75523	22.601.302-02	.CORE	1
18	XAOZZ	75523	22.601.830-01	.CUSHION, RUBBER	1
19	XAOZZ	75523	22.122.760-01	.CLIP, RETAINING	2
20	XBOZZ	23530	5232	FITTING, HEXAGON, STRAIGHT, 1/2 IN	3
21	XBOZZ	09127	TYPE E.F.	CONDUIT	1
22	XBOZZ	04718	86-398	WIRE, TYPE TW, 14 GAUGE, INSULATED, SOLID COPPER	1
23	XBOZZ	93061	68C12-8	ADAPTER, STRAIGHT, PI	3
24	XBOZZ	23530	5252	ELBOW, 1/2 IN, 90 DEG	1
25	PAOZZ	23826	69HA1	SWITCH, PRESSURE NEMA 1, 3/8 IN FEMALE NPTF	1
26	PAOZZ	23826	75HA69	.REPAIR KIT, PRESSURE SWITCH	1
27	PAOZZ	96906	MS24523-22	SWITCH, TOGGLE	1
28	XBOZZ	75523	DT2R(RESET)DFIS	SWITCH, RESET	1

END OF FIGURE

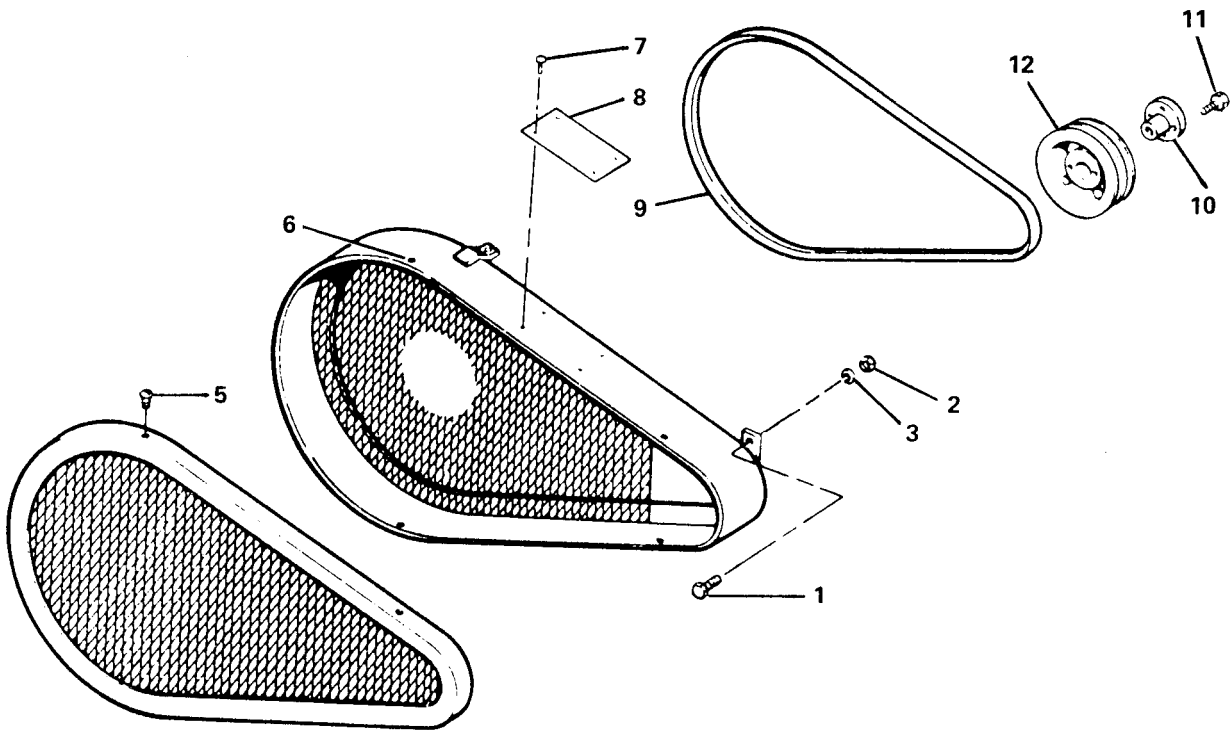
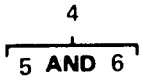
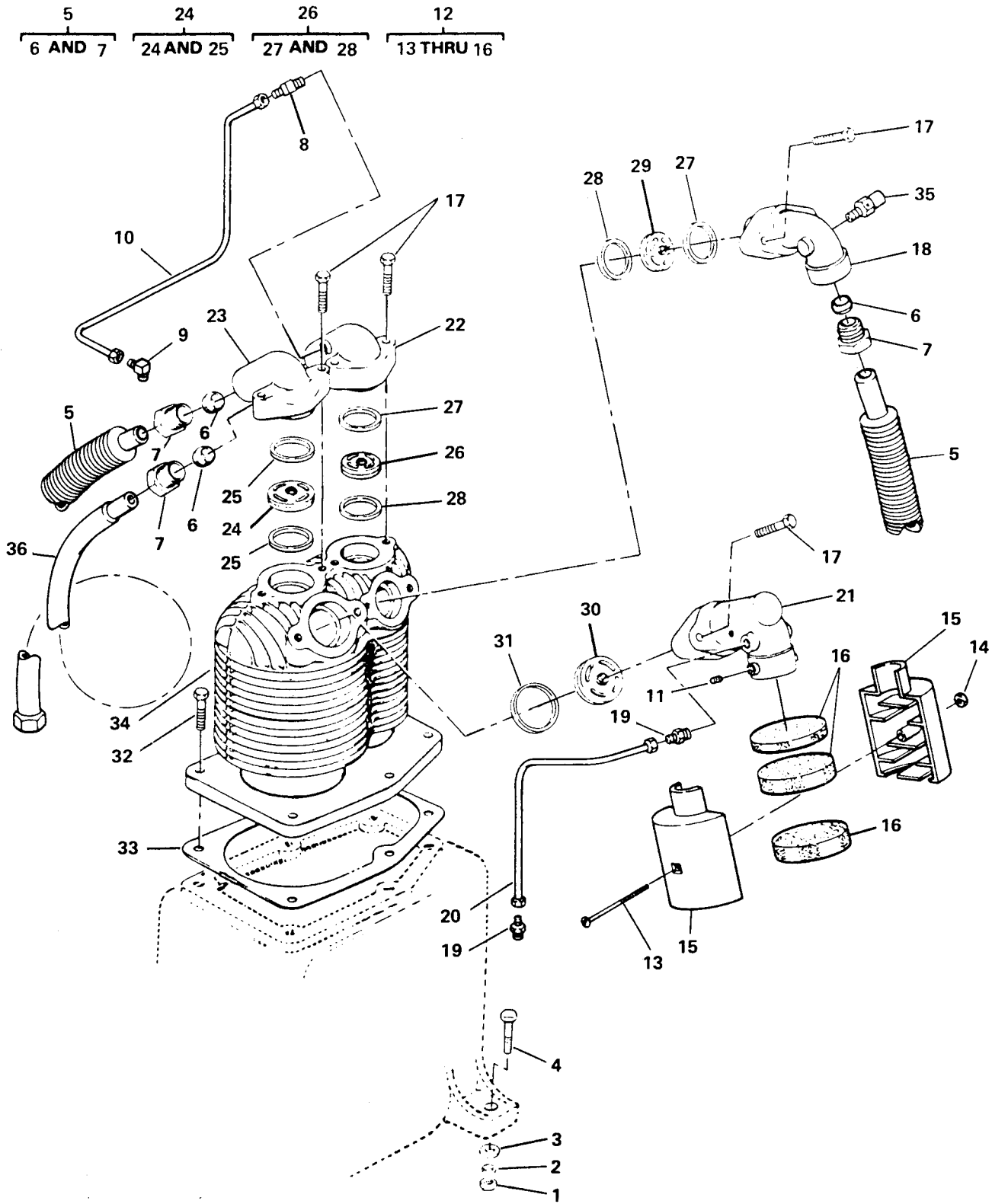


Figure 2. Compressor Drive.



SECTION II				TM5-4310-373-24P	
(1)	(2)	(3)	(4)	(5)	(6)
ITEM NO	SMR CODE	FSCM	PART NUMBER	DESCRIPTION AND USABLE ON CODE (UOC)	QTY
GROUP 02 COMPRESSOR DRIVE					
FIG. 2 COMPRESSOR DRIVE					
1	PAOZZ	96906	MS90725-32	BOLT,MACHINE 5/16-18 X 3/4	2
2	PAOZZ	96906	MS51967-35	NUT,PLAIN,HEXAGON 5/16-18	2
3	PAOZZ	96906	MS35333-41	WASHER,LOCK 5/16 IN	2
4	XBOOO	04718	88-028	GUARD ASSY, BELT	1
5	PAOZZ	96906	MS35206-243	.SCREW,MACHINE 8-32 X 3/8	4
6	PAOZZ	96906	MS27130A13	NUT,PLAIN,BLIND RIV	4
7	PAOZZ	96096	MS20470A4-4	RIVET,SOLID	4
8	XBOZZ	04718	86-395	PLATE,CAUTION	1
9	PAOZZ	71176	B66	BELT,V	2
10	XBOZZ	71176	H1 1/8	BUSHING ASSY, PULLEY	1
11	PAOZZ	96906	MS90725-6	.SCREW,CAP,HEXAGON 1/4-20 X 3/4, NC	2
12	XBOZZ	71176	2BK67H	PULLEY	1

END OF FIGURE



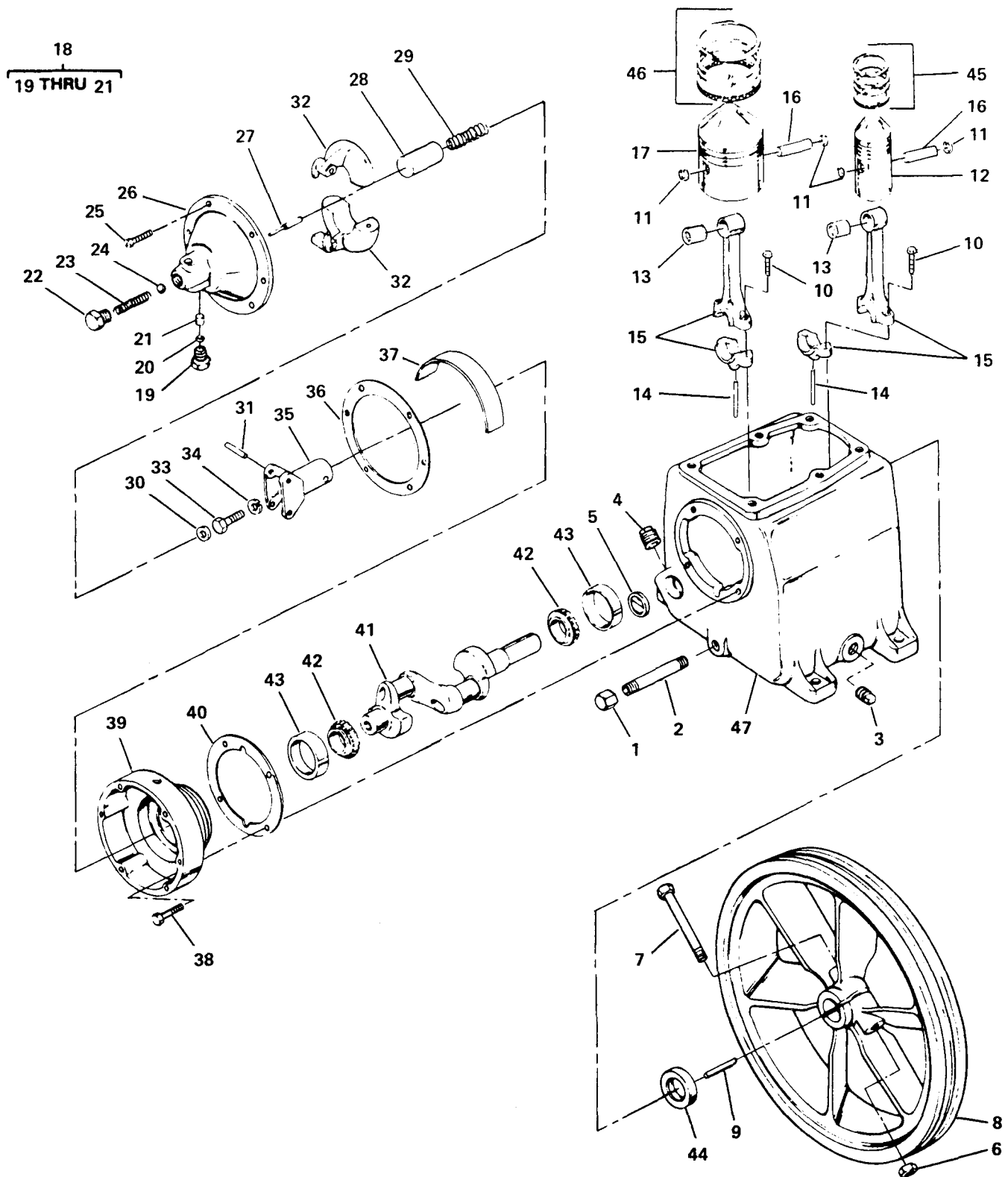
4769-003

Figure 3. Compressor Assembly - Cylinder and Valves.

SECTION II (1) ITEM NO	(2) SMR CODE	(3) FSCM	TM5-4310-373-24P (4) PART NUMBER	(5) DESCRIPTION AND USABLE ON CODE (UOC)	(6) QTY
GROUP 03 COMPRESSOR ASSEMBLY					
FIG. 3 COMPRESSOR ASSEMBLY-CYLINDER AND VALVES					
1	PAOZZ	11568	M909A	NUT,PLAIN,HEXAGON 3/8-16 UNC, COMPRESSOR MTG	4
2	PAOZZ	96906	MS35338-46	WASHER,LOCK 3/8 IN., COMPRESSOR MTG	4
3	PAOZZ	11568	SE5-88	WASHER,FLAT 3/8 IN., COMPRESSOR MTG	4
4	XDOZZ	96906	MS90725-64	SCREW,CAP,HEXAGON 3/8-16 UNC X 1-1/ 2 IN., COMPRESSOR MTG	4
5	XBOOO	11568	RE4-12A	.TUBE,INTERCOOLER	1
6	PAOZZ	11568	SE5-42	..SLEEVE,COMPRESSOR, FERRULE	3
7	PAOZZ	11568	SE5-41	..INVERTED NUT,TUBE COMPRESSION	3
8	PAOZZ	11568	Z-513	.ELBOW,PIPE TO TUBE 1/4 IN. X 1/8 IN. X 90 DEG	1
9	PAOZZ	11568	Z-513	.ELBOW,PIPE TO TUBE 1/4 IN. X 1/4 IN. X 90 DEG	1
10	PAOZZ	11568	SB250A	.TUBE ASSEMBLY,METAL UNLOADING	1
11	PAOZZ	11568	M432	.SETSCREW, 1/4-20 UNC X 1/4 IN., MUFFFLER MTG	1
12	PAOOZ	11568	Z-828	.AIR CLEANER,INTAKE	1
13	PAOZZ	11568	P4751	..SCREW,MACHINE	1
14	PAOZZ	11568	P4752	..NUT,PLAIN,SQUARE	1
15	XAOZZ	11568	P4576C	..INTAKE,AIR	1
16	PAOZZ	11568	Z-837	..FILTER ELEMENT,FLUI	1
17	PAOZZ	11568	M1737	.SCREW,CAP,HEXAGON , 3/8-16 UNC X 1-5/8 IN., MANIFOLD MTG	8
18	PAOZZ	11568	SE5-2B	.ELBOW,FLANGE TO TUB HP, INTAKE	1
19	PAOZZ	96906	MS39169-15	.ADAPTER,STRAIGHT,PI 3/8 IN. X 1/4 IN. X ST	2
20	XBOZZ	11568	UB375	.TUBE,BREATHER	1
21	XBOZZ	11568	R10-B-2	.MANIFOLD,INTAKE, LP	1
22	PAFZZ	11568	NR2B	.MANIFOLD,COMPRESSOR HP,EXHAUST	1
23	XBFZZ	11568	RE10-2E	.ELBOW,FLANGE TO TUB LP	1
24	PAOZZ	11568	Z813	.PARTS KIT,COMPRESSO LP	1
25	PAOZZ	11568	P4135A	..GASKET EXHAUST VALVE, LP, UPPER AND LOWER PART OF KIT P/N Z-102G	2
26	PAOZZ	11568	Z115	.VALVE ASSEMBLY,DISC HP	1
27	PAOZZ	11568	P4137A	..GASKET EXHAUST AND INTAKE VALVES, HP, UPPER PART OF KIT P/N Z-102G	2
28	PAOZZ	11568	P4136A	..GASKET EXHAUST AND INTAKE VALVES, HP, LOWER PART OF KIT P/N Z-102G	2
29	PAOZZ	11568	Z113	.VALVE ASSEMBLY,INLE HP	1
30	PAOZZ	11568	Z812	.CARTRIDGE,SUCTION V LP	1
31	PAOZZ	11568	P4134A	..GASKET INTAKE L.P. PART OF KIT P/N Z-102G	1
32	PAOZZ	96906	MS90727-87	.SCREW,CAP,HEXAGON 7/16-20 UNC X 1- 1/4 IN., CYLINDER MTG	6
33	PAFZZ	11568	NR29A	.GASKET CYLINDER	1
34	XBFZZ	11568	NR14-6A	.CYLINDER	1
35	XBOZZ	12568	Z67-75	VALVE,RELIEF, INTERSTAGE SAFETY	1

SECTION II					
(1)	(2)	(3)	(4)	(5)	(6)
ITEM NO	SMR CODE	FSCM	PART NUMBER	DESCRIPTION AND USABLE ON CODE (UOC)	QTY
36	PAOZZ	04718	88-332	.TUBE ASSEMBLY,METAL	1
	PAOZZ	11568	Z-102G	..GASKET SET	1
				GASKET ( 2) 3-25	
				GASKET ( 2) 3-27	
				GASKET ( 2) 3-28	
				GASKET ( 1) 3-31	
END OF FIGURE					





4769-004

Figure 4. Compressor Assembly - Crankshaft and Pistons.

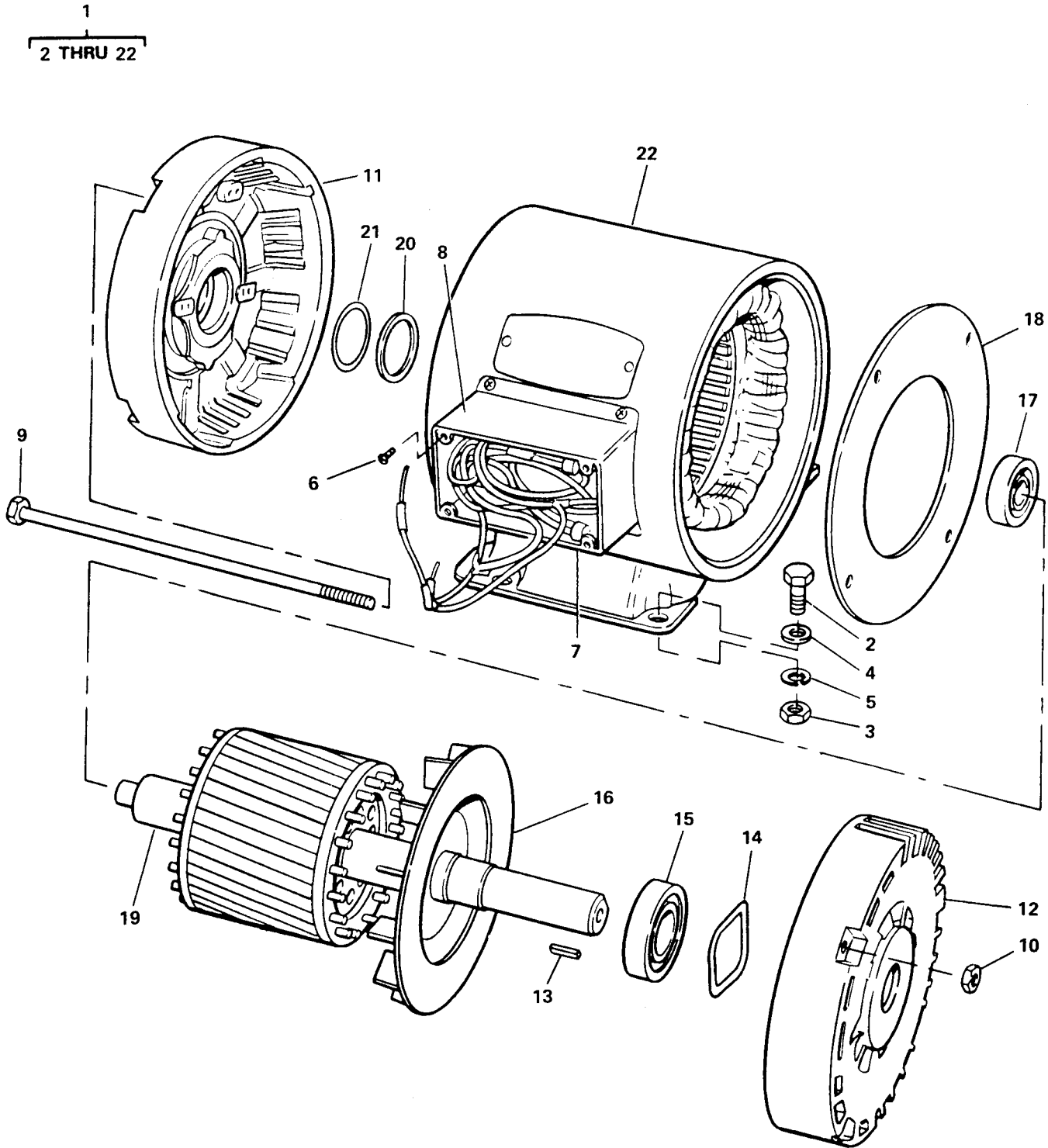
SECTION II (1) ITEM NO	(2) SMR CODE	(3) FSCM	TM5-4310-373-24P (4) PART NUMBER	(5) DESCRIPTION AND USABLE ON CODE (UOC)	(6) QTY
GROUP 03 COMPRESSOR ASSEMBLY					
FIG. 4 COMPRESSOR ASSEMBLY-CRANK-SHAFT AND PISTONS					
1	PAOZZ	11568	M461	.CAP,PIPE 3/8 IN., NPT	1
2	XBOZZ	11568	M460	.NIPPLE,PIPE, 3/8 IN.,NPT X 6 IN	1
3	XBOZZ	11568	M459	.PLUG,PIPE, 3/4 IN.,NPT	1
4	XBOZZ	11568	M504	.PLUG,PIPE, 1/4 IN.,NPT	2
5	PAFZZ	70925	B5093	.INDICATOR,SIGHT,LIQ	1
6	PAOZZ	96906	MS51967-14	.NUT,PLAIN,HEXAGON 1/2-13 UNC, FLYWHEEL ATTACHING	1
7	PAOZZ	96906	MS90728-123	.SCREW,CAP,HEXAGON H 1/2-13 UNC X 4 IN., FLYWHEEL ATTACHING	1
8	XBOZZ	11568	NR7A	.FLYWHEEL COMPRESSOR	1
9	XBFZZ	11568	SE5-8	.KEY,FLYWHEEL, 1/4 IN., X 1/4 IN. X 2 IN	1
10	XBFZZ	11568	M1583	.BOLT,CONNECTING ROD	4
11	XBFZZ	75364	M5000-81	.RING,RETAINING PIN	4
12	XBFZZ	11568	R10-4	.PISTON,COMPRESSOR, HP	1
13	PAFZZ	11568	R10-37	.BEARING,SLEEVE	2
14	XBOZZ	11568	R15-24	.DIPPER,OIL	2
15	PAFZZ	11568	Z-750	.CONNECTING ROD,PIST	2
16	PAFZZ	11568	R10-21	.PIN,STRAIGHT,HEADLE	2
17	PAFZZ	11568	R15-4	.PISTON,COMPRESSOR LP	1
18	PAOZZ	11568	Z60A	.BREATHER UNLOADER	1
19	XAOZZ	11568	M1046	..BODY,MUFFLER	1
20	XDOZZ	11568	M97A	..SCREEN,MUFFLER, COMP	1
21	XDOZZ	11568	M98A	..FELT,MECHANICAL	1
22	XBOZZ	11568	NR101	.BODY,RELEASE VALVE	1
23	PAFZZ	11568	SE5-91	.SPRING,HELICAL,COMP	1
24	PAFZZ	11568	SE5-95	.BALL,RELEASE VALVE	1
25	PAFZZ	11568	SE14-84	.SCREW,MACHINE FILISTER	6
26	XBFZZ	11568	RE10-100A	.COVER,GOV.HOUSING	1
27	PAFZZ	11568	SE5-86B	.PLUNGER,DETENT VALVE	1
28	PAFZZ	11568	SE5-87	.GUIDE SPRING	1
29	PAFZZ	11568	SE5-90	.SPRING,HELICAL,COMP	1
30	PAFZZ	27315	3612V004	.WASHER,FLAT 5/16 IN	1
31	PAFZZ	11568	SE5-92A	.PIN,SPRING GOVERNOR WEIGHT	2
32	XBFZZ	11568	SE5-82	.WEIGHT,GOVERNOR	2
33	XBFZZ	11568	SE5-94	.SCREW,CAP,HEX HEAD , 7/16-20 UNF X 1 IN., GOVERNOR SPINDLE ATTACHING	1
34	XDFZZ	12603	4E07J	.WASHER,LOCK 7/16 IN	1
35	PAFZZ	11568	SE5-83B	.SPINDLE GOVERNOR	1
36	PAFZZ	11568	SE14-89	.GASKET GOVERNOR COVER	1
37	XBFZZ	11568	NR104	.PLATE,BAFFLE	1
38	PAFZZ	96906	MS18154-60	.SCREW,CAP,HEXAGON 3/8-16 X 1 IN., GOVERNOR	4
39	XBFZZ	11568	NR80A	.HOUSING,GOVERNOR	1
40	PAFZZ	11568	SE14-30	.GASKET,GOV. HOUSING	1
40	PAFZZ	11568	SE14-30A	.GASKET,GOV. HOUSING	1
40	PAFZZ	11568	SE14-30B	.GASKET,GOV. HOUSING	1

SECTION II		TM5-4310-373-24P				
(1)	(2)	(3)	(4)	(5)	(6)	
ITEM	SMR		PART			
NO	CODE	FSCM	NUMBER	DESCRIPTION AND USABLE ON CODE (UOC)		QTY
40	PAFZZ	11568	SE14-30C	.GASKET,GOV. HOUSING		1
41	PBFZZ	11568	R15-5	.CRANKSHAFT,COMPRESS		1
42	PAFZZ	60038	14138A	.CONE AND ROLLERS,TA		2
43	PAFZZ	60038	14276	.CUP,TAPERED ROLLER		2
44	PAFZZ	11568	OS-N4	.SEAL,PLAIN ENCASED		1
45	PAFZZ	11568	Z189C	.RING SET,PISTON HP		1
46	PAFZZ	11568	Z179C	.RING SET,PISTON LP		1
47	XBHZZ	11568	M1820	.CRANKCASE		1

END OF FIGURE







4769-005

Figure 5. Electric Motor.

SECTION II (1)	ITEM (2)	(3)	TM5-4310-373-24P (4)	(5)	(6)
NO	SMR CODE	FSCM	PART NUMBER	DESCRIPTION AND USABLE ON CODE (UOC)	QTY
GROUP 04 MOTOR, ELECTRIC					
FIG. 5 ELECTRIC MOTOR					
1	PBOFF	56065	130004-01	MOTOR,ALTERNATING 5 HP 60 HZ 3 PH	1
2	PAOZZ	96906	MS90728-61	SCREW,CAP,HEXAGON 3/8-16X1-1/4	4
3	PAOZZ	96906	MS51967-38	NUT,PLAIN,HEXAGON 3/8-16	4
4	PAOZZ	96906	MS27183-14	WASHER,FLAT 3/8	4
5	PAOZZ	96906	MS35333-42	WASHER,LOCK 3/8	4
6	PAOZZ	96906	MS35206-243	.SCREW,MACHINE	8
7	XBOZZ	56056	006034-01	.GASKET, CONDUIT BOX	1
8	XBOZZ	56065	003202-01	.BOX,CONDUIT	1
9	XBOZZ	56065	003802-02	.BOLT,THRU, INDENTED HEX WASHER HD, 1/4-20 X 10 IN	4
10	PAOZZ	96906	MS51967-35	.NUT,PLAIN,HEXAGON 1/4-20	4
11	XBFZZ	56065	021500-01	.ENDBELL,REAR	1
12	XBFZZ	56065	021501-01	.ENDBELL,FRONT	1
13	PAOZZ	71176	00600Z-02	.KEY,MACHINE 1/4 X 1/4 X 1-3/4	1
14	XBFZZ	56065	004300-06	.SPRING,WAVY	1
15	PAFZZ	56065	002004-04	.BEARING,BALL,ANNULA FRONT	1
16	XAFZZ	56065	003523-02	.FAN (PART OF ROTOR AND SHAFT ASSEMBLY-NONREPLACEABLE)	1
17	PAFZZ	43334	77506EL	.BEARING,BALL,ANNULA REAR	1
18	XBFZZ	56065	003702-01	.BAFFLE	1
19	XAOZZ	04718	86-106	.ROTOR AND SHAFT ASSEMBLY	1
20	XBOZZ	56056	006028-02	.BUSHING, LEAD HOLE	2
21	XBFZZ	56065	004302-01	.SPACER,RING	1
22	XAFZZ	04718	86-105	.FRAME AND STATOR ASSEMBLY	1

END OF FIGURE

3  
4 THRU 6

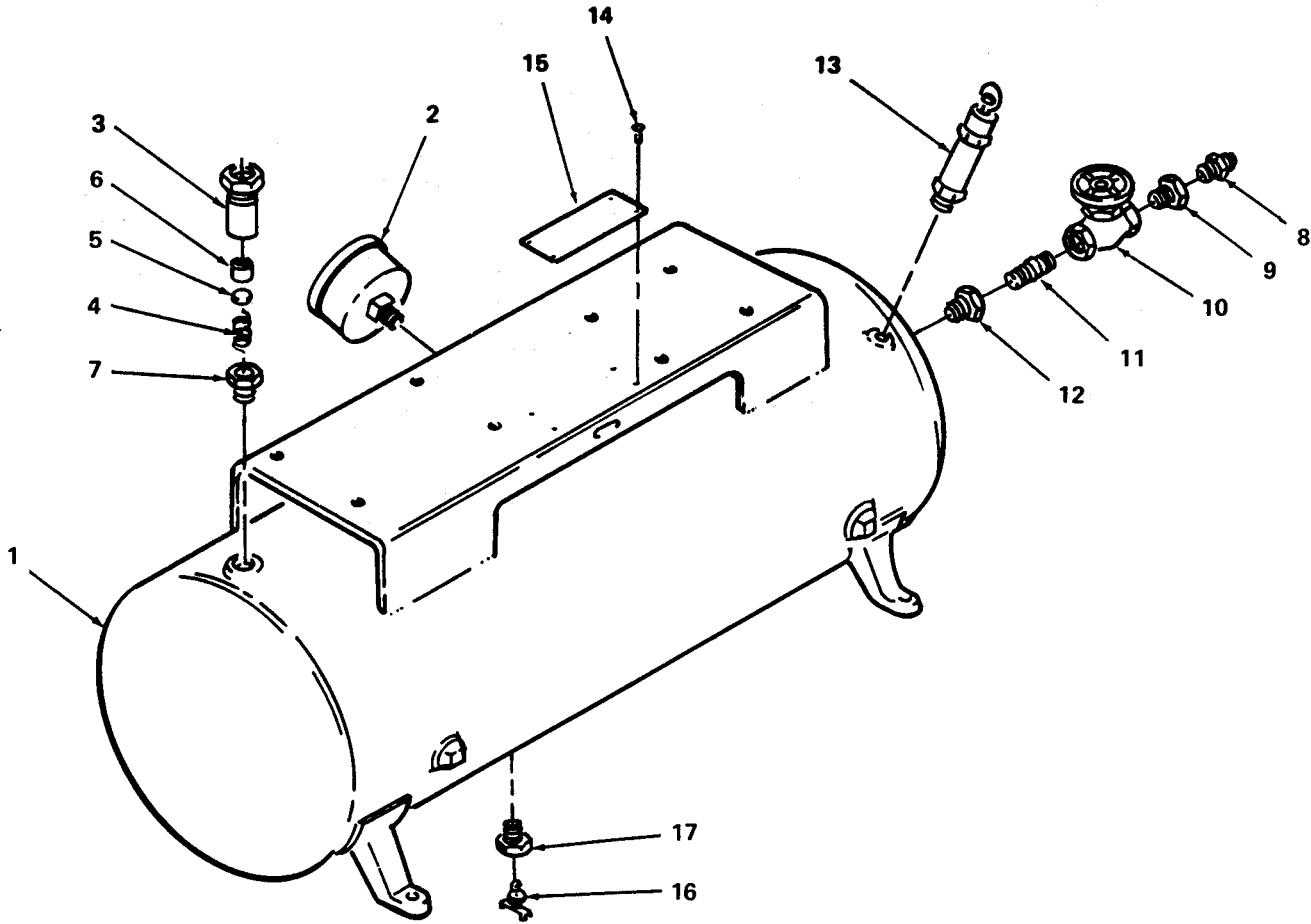
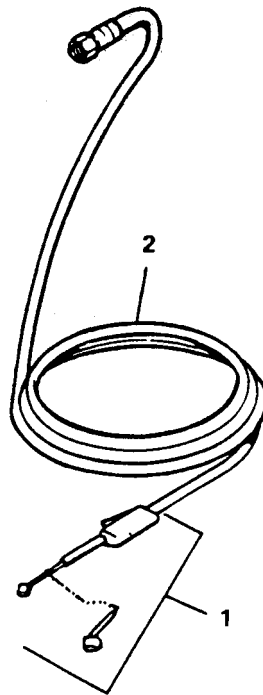


Figure 6. Air Receiver System.

SECTION II (1)	ITEM (2)	FSCM (3)	TM5-4310-373-24P (4) PART NUMBER	(5) DESCRIPTION AND USABLE ON CODE (UOC)	(6) QTY
GROUP 05 AIR RECEIVER SYSTEM					
FIG. 6 AIR RECEIVER SYSTEM					
1	XBOZZ	04718	86-280	TANK	1
2	PAOZZ	38508	J5458	GAGE,PRESSURE,DIAL	1
3	PAOOO	75336	224A1/2X3/4	VALVE,CHECK	1
4	PAOZZ	75336	KC780-37	.SPRING,HELICAL,COMP CHECK VALVE	1
5	PAOZZ	75336	KC105-3	.DISK,VALVE CHECK VALVE	1
6	XAOZZ	75336	224A562	.CAGE CHECK VALVE	1
7	PAOZZ	96906	MS14304-2T1612	BUSHING,PIPE 1 X 3/4	1
8	PAOZZ	93061	127HB4-4	ADAPTER,STRAIGHT,PI JOINT ADAPTER	1
9	XBOZZ	04718	1047-16	BUSHING,REDUCING, 1/2 X 1/4	1
10	XDOZZ	75336	501-1/2	VALVE,GLOBE , 1/2 IN PIPE THREAD 200 PSI WOG RATING	1
11	PAOZZ	96906	MS51953-49	NIPPLE,PIPE	1
12	XDOZZ	96906	MS14304-2T1208	BUSHING,PIPE 3/4 X 1/2	1
13	PAOZZ	75336	112C1/4 200	VALVE,SAFETY RELIEF ,200 PSI 1/4 IN NPT	1
14	PAFZZ	96906	MS20470A4-4	RIVIT,SOLID	4
15	XBOZZ	04718	86-396	NAMEPLATE	1
16	XDOZZ	93061	DC604-4	COCK,DRAIN ,1/4	1
17	PAOZZ	96906	MS14304-2T1204	BUSHING,PIPE 3/4 X 1/4	1
END OF FIGURE					



*Figure 7. Air Discharge System.*

SECTION II					
(1)	(2)	(3)	(4)	(5)	(6)
ITEM NO	SMR CODE	FSCM	PART NUMBER	DESCRIPTION AND USABLE ON CODE (UOC)	QTY
				GROUP 06 AIR DISCHARGE SYSTEM	
				FIG. 7 AIR DISCHARGE SYSTEM	
1	PAOZZ	94894	61J2-1506	INFLATOR-GAGE,PNEUM ASSEMBLY	1
2	PAOZZ	04718	88-751	HOSE ASSEMBLY, NON-METALLIC	1
				END OF FIGURE	





Section III. SPECIAL TOOLS LIST

(Not Applicable)



## CROSS-REFERENCE INDEXES

## NATIONAL STOCK NUMBER INDEX

STOCK NUMBER	FIG	ITEM	STOCK NUMBER	FIG	ITEM
5310-00-007-9869	4	30	5310-00-655-9544	3	1
4730-00-019-2067	6	11	5930-00-683-1628	1	27
5305-00-068-0502	2	11	5305-00-709-8523	3	32
5305-00-071-2079	4	7	5310-00-762-6241	1	3
5310-00-079-4577	2	6		2	2
5310-00-080-6004	5	4		5	10
5930-00-087-4027	1	25	5310-00-762-6247	5	3
3110-00-100-0516	4	43	4310-00-773-7986	4	46
3110-00-100-3150	4	42	5360-00-850-5541	4	29
5305-00-151-6876	4	25	4730-00-850-7971	3	7
5310-00-167-0721	2	3	2990-00-863-0926	4	35
5315-00-168-2969	4	31	3110-00-869-4535	5	17
4910-00-204-2644	7	1	5330-00-875-4107	3	
4310-00-208-7126	4	17	5340-00-884-4582	4	28
4730-00-213-0651	4	1	4310-00-896-5984	4	18
5310-00-224-0765	3	3	5305-00-942-2196	4	38
5306-00-225-8497	2	1	4710-00-961-5554	3	10
5306-00-225-8499	1	2	5305-00-984-6191	2	5
4730-00-270-6113	3	6		5	6
4730-00-273-8561	3	19	5305-01-011-3072	3	11
4310-00-283-3288	3	22	5330-01-014-4308	4	40
5305-00-331-4856	3	17	5330-01-014-4309	4	40
6680-00-377-4915	4	5	5315-01-014-4456	4	16
4730-00-406-6969	3	8	5330-01-014-8324	3	27
	3	9	5330-01-014-8325	3	25
4730-00-430-9672	3	18	5330-01-015-1029	3	28
5330-00-450-4130	3	33	4310-01-036-8684	4	15
4310-00-450-9213	3	12	5310-01-070-2105	4	6
4820-00-477-7958	6	13	6685-01-078-7556	6	2
4310-00-477-9775	4	45	4720-01-084-0118	7	2
4310-00-493-2057	4	41	5310-01-088-4027	3	14
3120-00-493-3912	4	13	5305-01-088-5848	1	7
5930-00-521-8471	1	26	5305-01-088-6824	3	13
3030-00-529-0466	2	9	4310-01-101-7195	3	16
5305-00-543-2419	5	2	5330-01-102-1890	4	44
5310-00-543-2740	1	4	4730-01-155-5052	6	8
5330-00-584-8999	3	31	4820-01-155-5899	6	5
5320-00-584-9078	2	7	4710-01-156-0090	3	36
	6	14	5360-01-157-5045	6	4
5330-00-585-4283	4	36	4820-01-159-3138	6	3
5330-00-585-9950	4	40	3110-01-160-2174	5	15
5310-00-595-7237	5	5	6105-01-169-0932	5	1
5360-00-616-4373	4	23	6110-01-198-6154	1	6
5340-00-625-6747	4	27	4730-01-237-0511	6	17
4310-00-631-3396	3	26			
4820-00-631-3397	3	29			
4310-00-631-3398	3	24			
4820-00-631-3399	3	30			
5330-00-633-6114	4	40			
5310-00-637-9541	3	2			

## CROSS-REFERENCE INDEXES

## PART NUMBER INDEX

FSCM	PART NUMBER	STOCK NUMBER	FIG	ITEM
70925	B5093	6680-00-377-4915	4	5
71176	B66	3030-00-529-0466	2	9
75523	CA-23A-M12		1	1
75523	CA3-23A-240AC		1	11
52034	CA3-23A-240AC-CT 3-23A-M12	6110-01-198-6154	1	6
75523	CT3-23A		1	9
93061	DC604-4		6	16
75523	DT2R(RESET)DFIS		1	28
23826	D25013-001	5305-01-088-5848	1	7
71176	H1 1/8		2	10
38508	J5458	6685-01-078-7556	6	2
75336	KC105-3	4820-01-155-5899	6	5
75336	KC780-37	5360-01-157-5045	6	4
96906	MS14304-2T1204	4730-01-237-0511	6	17
96906	MS14304-2T1208		6	12
96906	MS14304-2T1612		6	7
96906	MS18154-60	5305-00-942-2196	4	38
96906	MS20470A4-4	5320-00-584-9078	2	7
			6	14
96906	MS24523-22	5930-00-683-1628	1	27
96906	MS27130A13	5310-00-079-4577	2	6
96906	MS27183-14	5310-00-080-6004	5	4
96906	MS35206-243	5305-00-984-6191	2	5
			5	6
96906	MS35333-41	5310-00-167-0721	2	3
96906	MS35333-42	5310-00-595-7237	5	5
96906	MS35333-74	5310-00-543-2740	1	4
96906	MS35338-46	5310-00-637-9541	3	2
96906	MS39169-15	4730-00-273-8561	3	19
96906	MS51953-49	4730-00-019-2067	6	11
96906	MS51967-14	5310-01-070-2105	4	6
96906	MS51967-35	5310-00-762-6241	1	3
			2	2
			5	10
96906	MS51967-38	5310-00-762-6247	5	3
96906	MS90725-32	5306-00-225-8497	2	1
96906	MS90725-34	5306-00-225-8499	1	2
96906	MS90725-6	5305-00-068-0502	2	11
96906	MS90725-64		3	4
96906	MS90727-87	5305-00-709-8523	3	32
96906	MS90728-123	5305-00-071-2079	4	7
96906	MS90728-61	5305-00-543-2419	5	2
11568	M1046		4	19
11568	M1583		4	10
11568	M1737	5305-00-331-4856	3	17
11568	M1820		4	47
11568	M432	5305-01-011-3072	3	11
11568	M459		4	3
11568	M460		4	2
11568	M461	4730-00-213-0651	4	1

## CROSS-REFERENCE INDEXES

## PART NUMBER INDEX

FSCM	PART NUMBER	STOCK NUMBER	FIG	ITEM
75364	M5000-81		4	11
11568	M504		4	4
11568	M909A	5310-00-655-9544	3	1
11568	M97A		4	20
11568	M98A		4	21
11568	NR101		4	22
11568	NR104		4	37
11568	NR14-6A		3	34
11568	NR2B	4310-00-283-3288	3	22
11568	NR29A	5330-00-450-4130	3	33
11568	NR7A		4	8
11568	NR80A		4	39
11568	OS-N4	5330-01-102-1890	4	44
11568	P4134A	5330-00-584-8999	3	31
11568	P4135A	5330-01-014-8325	3	25
11568	P4136A	5330-01-015-1029	3	28
11568	P4137A	5330-01-014-8324	3	27
11568	P4576C		3	15
11568	P4751	5305-01-088-6824	3	13
11568	P4752	5310-01-088-4027	3	14
11568	RE10-100A		4	26
11568	RE10-2E		3	23
11568	RE4-12A		3	5
11568	R10-B-2		3	21
11568	R10-21	5315-01-014-4456	4	16
11568	R10-37	3120-00-493-3912	4	13
11568	R10-4		4	12
11568	R15-24		4	14
11568	R15-4	4310-00-208-7126	4	17
11568	R15-5	4310-00-493-2057	4	41
11568	SB250A	4710-00-961-5554	3	10
11568	SE14-30	5330-00-585-9950	4	40
11568	SE14-30A	5330-00-633-6114	4	40
11568	SE14-30B	5330-01-014-4308	4	40
11568	SE14-30C	5330-01-014-4309	4	40
11568	SE14-84	5305-00-151-6876	4	25
11568	SE14-89	5330-00-585-4283	4	36
11568	SE5-2B	4730-00-430-9672	3	18
11568	SE5-41	4730-00-850-7971	3	7
11568	SE5-42	4730-00-270-6113	3	6
11568	SE5-8		4	9
11568	SE5-82		4	32
11568	SE5-83B	2990-00-863-0926	4	35
11568	SE5-86B	5340-00-625-6747	4	27
11568	SE5-87	5340-00-884-4582	4	28
11568	SE5-88	5310-00-224-0765	3	3
11568	SE5-90	5360-00-850-5541	4	29
11568	SE5-91	5360-00-616-4373	4	23
11568	SE5-92A	5315-00-168-2969	4	31
11568	SE5-94		4	33
11568	SE5-95		4	24

## CROSS-REFERENCE INDEXES

## PART NUMBER INDEX

FSCM	PART NUMBER	STOCK NUMBER	FIG	ITEM
09127	TYPE E.F.		1	21
11568	UB375		3	20
11568	Z-102G	5330-00-875-4107	3	
11568	Z-513	4730-00-406-6969	3	8
			3	9
11568	Z-750	4310-01-036-8684	4	15
11568	Z-828	4310-00-450-9213	3	12
11568	Z-837	4310-01-101-7195	3	16
11568	Z113	4720-00-631-3397	3	29
11568	Z115	4310-00-631-3396	3	26
11568	Z179C	4310-00-773-7986	4	46
11568	Z189C	4310-00-477-9775	4	45
11568	Z60A	4310-00-896-5984	4	18
12568	Z67-75		3	35
11568	Z812	4820-00-631-3399	3	30
11568	Z813	4310-00-631-3398	3	24
56065	002004-04	3110-01-160-2174	5	15
56065	003202-01		5	8
56065	003523-02		5	16
56065	003702-01		5	18
56065	003802-02		5	9
56065	004300-06		5	14
56065	004302-01		5	21
71176	00600Z-02		5	13
56056	006028-02		5	20
56056	006034-01		5	7
56065	021500-01		5	11
56065	021501-01		5	12
04718	1047-16		6	9
75336	112C1/4 200	4820-00-477-7958	6	13
93061	127HB4-4	4730-01-155-5052	6	8
56065	130004-01	6105-01-169-0932	5	1
60038	14138A	3110-00-100-3150	4	42
60038	14276	3110-00-100-0516	4	43
04718	1867-1		1	5
71176	2BK67H		2	12
75523	22.122.760-01		1	19
75523	22.601.211-01		1	8
75523	22.601.302-02		1	17
75523	22.601.304230AC		1	12
75523	22.601.411-01		1	10
75523	22.601.503-02		1	15
75523	22.601.754-01		1	13
75523	22.601.830-01		1	18
75523	22.601.831-03		1	14
75523	22.601.833-01		1	16
75336	224A1/2X3/4	4820-01-159-3138	6	3
75336	224A562		6	6
27315	3612V004	5310-00-007-9869	4	30
12603	4E07J		4	34
75336	501-1/2		6	10

## CROSS-REFERENCE INDEXES

## PART NUMBER INDEX

FSCM	PART NUMBER	STOCK NUMBER	FIG	ITEM
23530	5232		1	20
23530	5252		1	24
94894	61J2-1506	4910-00-204-2644	7	1
93061	68C12-8		1	23
23826	69HA1	5930-00-087-4027	1	25
23826	75HA69	5930-00-521-8471	1	26
43334	77506EL	3110-00-869-4535	5	17
04718	86-105		5	22
04718	86-106		5	19
04718	86-280		6	1
04718	86-395		2	8
04718	86-396		6	15
04718	86-398		1	22
04718	88-028		2	4
04718	88-332	4710-01-156-0090	3	36
04718	88-751	4720-01-084-0118	7	2

## CROSS-REFERENCE INDEXES

FIGURE AND ITEM NUMBER INDEX				
FIG	ITEM	STOCK NUMBER	FSCM	PART NUMBER
1	1		75523	CA-23A-M12
1	2	5306-00-225-8499	96906	MS90725-34
1	3	5310-00-762-6241	96906	MS51967-35
1	4	5310-00-543-2740	96906	MS35333-74
1	5		04718	1867-1
1	6	6110-01-198-6154	52034	CA3-23A-240AC-CT 3-23A-M12
1	7	5305-01-088-5848	23826	D25013-001
1	8		75523	22.601.211-01
1	9		75523	CT3-23A
1	10		75523	22.601.411-01
1	11		75523	CA3-23A-240AC
1	12		75523	22.601.304230AC
1	13		75523	22.601.754-01
1	14		75523	22.601.831-03
1	15		75523	22.601.503-02
1	16		75523	22.601.833-01
1	17		75523	22.601.302-02
1	18		75523	22.601.830-01
1	19		75523	22.122.760-01
1	20		23530	5232
1	21		09127	TYPE E.F.
1	22		04718	86-398
1	23		93061	68C12-8
1	24		23530	5252
1	25	5930-00-087-4027	23826	69HA1
1	26	5930-00-521-8471	23826	75HA69
1	27	5930-00-683-1628	96906	MS24523-22
1	28		75523	DT2R(RESET)DFIS
2	1	5306-00-225-8497	96906	MS90725-32
2	2	5310-00-762-6241	96906	MS51967-35
2	3	5310-00-167-0721	96906	MS35333-41
2	4		04718	88-028
2	5	5305-00-984-6191	96906	MS35206-243
2	6	5310-00-079-4577	96906	MS27130A13
2	7	5320-00-584-9078	96096	MS20470A4-4
2	8		04718	86-395
2	9	3030-00-529-0466	71176	B66
2	10		71176	H1 1/8
2	11	5305-00-068-0502	96906	MS90725-6
2	12		71176	2BK67H
3		5330-00-875-4107	11568	Z-102G
3	1	5310-00-655-9544	11568	M909A
3	2	5310-00-637-9541	96906	MS35338-46
3	3	5310-00-224-0765	11568	SE5-88
3	4		96906	MS90725-64
3	5		11568	RE4-12A
3	6	4730-00-270-6113	11568	SE5-42
3	7	4730-00-850-7971	11568	SE5-41
3	8	4730-00-406-6969	11568	Z-513
3	9	4730-00-406-6969	11568	Z-513



## CROSS-REFERENCE INDEXES

FIG	ITEM	FIGURE AND ITEM NUMBER INDEX		PART NUMBER
		STOCK NUMBER	FSCM	
3	10	4710-00-961-5554	11568	SB250A
3	11	5305-01-011-3072	11568	M432
3	12	4310-00-450-9213	11568	Z-828
3	13	5305-01-088-6824	11568	P4751
3	14	5310-01-088-4027	11568	P4752
3	15		11568	P4576C
3	16	4310-01-101-7195	11568	Z-837
3	17	5305-00-331-4856	11568	M1737
3	18	4730-00-430-9672	11568	SE5-2B
3	19	4730-00-273-8561	96906	MS39169-15
3	20		11568	UB375
3	21		11568	R10-B-2
3	22	4310-00-283-3288	11568	NR2B
3	23		11568	RE10-2E
3	24	4310-00-631-3398	11568	Z813
3	25	5330-01-014-8325	11568	P4135A
3	26	4310-00-631-3396	11568	Z115
3	27	5330-01-014-8324	11568	P4137A
3	28	5330-01-015-1029	11568	P4136A
3	29	4820-00-631-3397	11568	Z113
3	30	4820-00-631-3399	11568	Z812
3	31	5330-00-584-8999	11568	P4134A
3	32	5305-00-709-8523	96906	MS90727-87
3	33	5330-00-450-4130	11568	NR29A
3	34		11568	NR14-6A
3	35		12568	Z67-75
3	36	4710-01-156-0090	04718	88-332
4	1	4730-00-213-0651	11568	M461
4	2		11568	M460
4	3		11568	M459
4	4		11568	M504
4	5	6680-00-377-4915	70925	B5093
4	6	5310-01-070-2105	96906	MS51967-14
4	7	5305-00-071-2079	96906	MS90728-123
4	8		11568	NR7A
4	9		11568	SE5-8
4	10		11568	M1583
4	11		75364	M5000-81
4	12		11568	R10-4
4	13	3120-00-493-3912	11568	R10-37
4	14		11568	R15-24
4	15	4310-01-036-8684	11568	Z-750
4	16	5315-01-014-4456	11568	R10-21
4	17	4310-00-208-7126	11568	R15-4
4	18	4310-00-896-5984	11568	Z60A
4	19		11568	M1046
4	20		11568	M97A
4	21		11568	M98A
4	22		11568	NR101
4	23	5360-00-616-4373	11568	SE5-91
4	24		11568	SE5-95

## CROSS-REFERENCE INDEXES

FIG	ITEM	FIGURE AND ITEM NUMBER INDEX		PART NUMBER
		STOCK NUMBER	FSCM	
4	25	5305-00-151-6876	11568	SE14-84
4	26		11568	RE10-100A
4	27	5340-00-625-6747	11568	SE5-86B
4	28	5340-00-884-4582	11568	SE5-87
4	29	5360-00-850-5541	11568	SE5-90
4	30	5310-00-007-9869	27315	3612V004
4	31	5315-00-168-2969	11568	SE5-92A
4	32		11568	SE5-82
4	33		11568	SE5-94
4	34		12603	4E07J
4	35	2990-00-863-0926	11568	SE5-83B
4	36	5330-00-585-4283	11568	SE14-89
4	37		11568	NR104
4	38	5305-00-942-2196	96906	MS18154-60
4	39		11568	NR80A
4	40	5330-00-585-9950	11568	SE14-30
4	40	5330-00-633-6114	11568	SE14-30A
4	40	5330-01-014-4308	11568	SE14-30B
4	40	5330-01-014-4309	11568	SE14-30C
4	41	4310-00-493-2057	11568	R15-5
4	42	3110-00-100-3150	60038	14138A
4	43	3110-00-100-0516	60038	14276
4	44	5330-01-102-1890	11568	OS-N4
4	45	4310-00-477-9775	11568	Z189C
4	46	4310-00-773-7986	11568	Z179C
4	47		11568	M1820
5	1	6105-01-169-0932	56065	130004-01
5	2	5305-00-543-2419	96906	MS90728-61
5	3	5310-00-762-6247	96906	MS51967-38
5	4	5310-00-080-6004	96906	MS27183-14
5	5	5310-00-595-7237	96906	MS35333-42
5	6	5305-00-984-6191	96906	MS35206-243
5	7		56056	006034-01
5	8		56065	003202-01
5	9		56065	003802-02
5	10	5310-00-762-6241	96906	MS51967-35
5	11		56065	021500-01
5	12		56065	021501-01
5	13		71176	00600Z-02
5	14		56065	004300-06
5	15	3110-01-160-2174	56065	002004-04
5	16		56065	003523-02
5	17	3110-00-869-4535	43334	77506EL
5	18		56065	003702-01
5	19		04718	86-106
5	20		56056	006028-02
5	21		56065	004302-01
5	22		04718	86-105
6	1		04718	86-280
6	2	6685-01-078-7556	38508	J5458
6	3	4820-01-159-3138	75336	224A1/2X3/4

## CROSS-REFERENCE INDEXES

FIG	ITEM	FIGURE AND ITEM NUMBER INDEX		PART NUMBER
		STOCK NUMBER	FSCM	
6	4	5360-01-157-5045	75336	KC780-37
6	5	4820-01-155-5899	75336	KC105-3
6	6		75336	224A562
6	7		96906	MS14304-2T1612
6	8	4730-01-155-5052	93061	127HB4-4
6	9		04718	1047-16
6	10		75336	501-1/2
6	11	4730-00-019-2067	96906	MS51953-49
6	12		96906	MS14304-2T1208
6	13	4820-00-477-7958	75336	112C1/4 200
6	14	5320-00-584-9078	96906	MS20470A4-4
6	15		04718	86-396
6	16		93061	DC604-4
6	17	4730-01-237-0511	96906	MS14304-2T1204
7	1	4910-00-204-2644	94894	61J2-1506
7	2	4720-01-084-0118	04718	88-751



**By Order of the Secretary of the Army:**

**Official:**

WILLIAM J. MEEHAN, II  
*Brigadier General, United States Army*  
*The Adjutant General*

CARL E. VUONO  
*General, United States Army*  
*Chief of Staff*

**DISTRIBUTION:**

To be distributed in accordance with DA Form 12-25A, Unit, Direct Support and General Support Maintenance requirements for Compressor, Reciprocating, Air, Electric, 15 CFM, 175 PSI (20-912).



RECOMMENDED CHANGES TO EQUIPMENT TECHNICAL PUBLICATIONS



THEN... JOT DOWN THE DOPE ABOUT IT ON THIS FORM. CAREFULLY TEAR IT OUT. FOLD IT AND DROP IT IN THE MAIL!

SOMETHING WRONG WITH THIS PUBLICATION?

FROM: (PRINT YOUR UNIT'S COMPLETE ADDRESS)

PFC JOHN DOE  
COA, 3d ENGINEER BN  
FT. LEONARDWOOD, MD 63108

DATE SENT

PUBLICATION NUMBER

TM 5-4310-373-24P

PUBLICATION DATE

28 August 1989

PUBLICATION TITLE

Compressor, Air Reciprocating

BE EXACT... PIN-POINT WHERE IT IS

PAGE NO.	PARA-GRAPH	FIGURE NO.	TABLE NO.
6	2-1 a		
B1		4-3	
125	line 20		

6

2-1  
a

FIGURE NO.

TABLE NO.

B1

4-3

125

line 20

IN THIS SPACE TELL WHAT IS WRONG AND WHAT SHOULD BE DONE ABOUT IT:

In line 6 of paragraph 2-1a the manual states the engine has 6 cylinders. The engine on my set only has 4 cylinders. Change the manual to show 4 cylinders.

Callout 16 on figure 4-3 is pointing at a bolt. In key to figure 4-3, item 16 is called a shim - Please correct one or the other.

I ordered a gasket, item 19 on figure B-16 by NSN 2 910-00-762-3001. I got a gasket but it doesn't fit. Supply says I got what I ordered, so the NSN is wrong. Please give me a good NSN

PRINTED NAME, GRADE OR TITLE, AND TELEPHONE NUMBER

JOHN DOE, PFC (268) 317-7111

SIGN HERE

JOHN DOE

DA FORM 2028-2  
1 JUL 79

PREVIOUS EDITIONS ARE OBSOLETE.  
DRSTS-M Overprint 1, 1 Nov 80

P.S.--IF YOUR OUTFIT WANTS TO KNOW ABOUT YOUR RECOMMENDATION MAKE A CARBON COPY OF THIS AND GIVE IT TO YOUR HEADQUARTERS.

TEAR ALONG PERFORATED LINE

FILL IN YOUR  
UNIT'S ADDRESS

FOLD BACK

DEPARTMENT OF THE ARMY

---

---

COMMANDER  
U S ARMY TROOP SUPPORT COMMAND  
ATTN: AMSTR-MCTS  
4300 GOODFELLOW BOULEVARD  
ST. LOUIS, MO 63120-1798

TEAR ALONG PERFORATED LINE



RECOMMENDED CHANGES TO EQUIPMENT TECHNICAL PUBLICATIONS



THEN... JOT DOWN THE DOPE ABOUT IT ON THIS FORM. CAREFULLY TEAR IT OUT. FOLD IT AND DROP IT IN THE MAIL!

**SOMETHING WRONG WITH THIS PUBLICATION?**

FROM: (PRINT YOUR UNIT'S COMPLETE ADDRESS)

DATE SENT

PUBLICATION NUMBER

TM 5-4310-373-24P

PUBLICATION DATE

28 August 1989

PUBLICATION TITLE

Compressor, Air Reciprocating

BE EXACT... PIN-POINT WHERE IT IS

PAGE NO

PARA-GRAPH

FIGURE NO

TABLE NO

IN THIS SPACE TELL WHAT IS WRONG AND WHAT SHOULD BE DONE ABOUT IT:

TEAR ALONG PERFORATED LINE

PRINTED NAME, GRADE OR TITLE, AND TELEPHONE NUMBER

SIGN HERE:

DA FORM 2028-2  
1 JUL 79

PREVIOUS EDITIONS ARE OBSOLETE.  
DRSTS-M Overprint 2, 1 Nov 80.

P.S.--IF YOUR OUTFIT WANTS TO KNOW ABOUT YOUR RECOMMENDATION MAKE A CARBON COPY OF THIS AND GIVE IT TO YOUR HEADQUARTERS.

FILL IN YOUR  
UNIT'S ADDRESS

FOLD BACK

DEPARTMENT OF THE ARMY

---

---

COMMANDER  
U S ARMY TROOP SUPPORT COMMAND  
ATTN: AMSTR-MCTS  
4300 GOODFELLOW BOULEVARD  
ST. LOUIS, MO 63120-1798

TEAR ALONG PERFORATED LINE

RECOMMENDED CHANGES TO EQUIPMENT TECHNICAL PUBLICATIONS

**SOMETHING WRONG WITH THIS PUBLICATION?**



THEN... JOT DOWN THE DOPE ABOUT IT ON THIS FORM. CAREFULLY TEAR IT OUT. FOLD IT AND DROP IT IN THE MAIL!

FROM: (PRINT YOUR UNIT'S COMPLETE ADDRESS)

DATE SENT

PUBLICATION NUMBER

TM 5-4310-373-24P

PUBLICATION DATE

28 August 1989

PUBLICATION TITLE

Compressor, Air Reciprocating

BE EXACT . . . PIN-POINT WHERE IT IS

PAGE NO	PARA-GRAPH	FIGURE NO	TABLE NO

IN THIS SPACE TELL WHAT IS WRONG AND WHAT SHOULD BE DONE ABOUT IT:

PRINTED NAME, GRADE OR TITLE, AND TELEPHONE NUMBER

SIGN HERE:

DA FORM 2028-2  
1 JUL 79

PREVIOUS EDITIONS ARE OBSOLETE.  
DRSTS-M Overprint 2, 1 Nov 80.

P.S.--IF YOUR OUTFIT WANTS TO KNOW ABOUT YOUR RECOMMENDATION MAKE A CARBON COPY OF THIS AND GIVE IT TO YOUR HEADQUARTERS.

TEAR ALONG PERFORATED LINE

FILL IN YOUR  
UNIT'S ADDRESS

FOLD BACK

DEPARTMENT OF THE ARMY

---

---

COMMANDER  
U S ARMY TROOP SUPPORT COMMAND  
ATTN: AMSTR-MCTS  
4300 GOODFELLOW BOULEVARD  
ST. LOUIS, MO 63120-1798

TEAR ALONG PERFORATED LINE

**RECOMMENDED CHANGES TO EQUIPMENT TECHNICAL PUBLICATIONS**



*THEN... JOT DOWN THE DOPE ABOUT IT ON THIS FORM, CAREFULLY TEAR IT OUT, FOLD IT AND DROP IT IN THE MAIL!*

**SOMETHING WRONG WITH THIS PUBLICATION?**

FROM: (PRINT YOUR UNIT'S COMPLETE ADDRESS)

DATE SENT

PUBLICATION NUMBER

TM 5-4310-373-24P

PUBLICATION DATE

28 August 1989

PUBLICATION TITLE

Compressor, Air Reciprocating

**BE EXACT... PIN-POINT WHERE IT IS**

PAGE NO	PARA-GRAPH	FIGURE NO	TABLE NO

**IN THIS SPACE TELL WHAT IS WRONG AND WHAT SHOULD BE DONE ABOUT IT:**

TEAR ALONG PERFORATED LINE

PRINTED NAME, GRADE OR TITLE, AND TELEPHONE NUMBER

SIGN HERE

FILL IN YOUR  
UNIT'S ADDRESS

FOLD BACK

DEPARTMENT OF THE ARMY

---

---

COMMANDER  
U S ARMY TROOP SUPPORT COMMAND  
ATTN: AMSTR-MCTS  
4300 GOODFELLOW BOULEVARD  
ST. LOUIS, MO 63120-1798

TEAR ALONG PERFORATED LINE

# The Metric System and Equivalents

## Linear Measure

1 centimeter = 10 millimeters = .39 inch  
 1 decimeter = 10 centimeters = 3.94 inches  
 1 meter = 10 decimeters = 39.37 inches  
 1 dekameter = 10 meters = 32.8 feet  
 1 hectometer = 10 dekameters = 328.08 feet  
 1 kilometer = 10 hectometers = 3,280.8 feet

## Weights

1 centigram = 10 milligrams = .15 grain  
 1 decigram = 10 centigrams = 1.54 grains  
 1 gram = 10 decigram = .035 ounce  
 1 dekagram = 10 grams = .35 ounce  
 1 hectogram = 10 dekagrams = 3.52 ounces  
 1 kilogram = 10 hectograms = 2.2 pounds  
 1 quintal = 100 kilograms = 220.46 pounds  
 1 metric ton = 10 quintals = 1.1 short tons

## Liquid Measure

1 centiliter = 10 milliliters = .34 fl. ounce  
 1 deciliter = 10 centiliters = 3.38 fl. ounces  
 1 liter = 10 deciliters = 33.81 fl. ounces  
 1 dekaliter = 10 liters = 2.64 gallons  
 1 hectoliter = 10 dekaliters = 26.42 gallons  
 1 kiloliter = 10 hectoliters = 264.18 gallons

## Square Measure

1 sq. centimeter = 100 sq. millimeters = .155 sq. inch  
 1 sq. decimeter = 100 sq. centimeters = 15.5 sq. inches  
 1 sq. meter (centare) = 100 sq. decimeters = 10.76 sq. feet  
 1 sq. dekameter (are) = 100 sq. meters = 1,076.4 sq. feet  
 1 sq. hectometer (hectare) = 100 sq. dekameters = 2.47 acres  
 1 sq. kilometer = 100 sq. hectometers = .386 sq. mile

## Cubic Measure

1 cu. centimeter = 1000 cu. millimeters = .06 cu. inch  
 1 cu. decimeter = 1000 cu. centimeters = 61.02 cu. inches  
 1 cu. meter = 1000 cu. decimeters = 35.31 cu. feet

## Approximate Conversion Factors

To change	To	Multiply by	To change	To	Multiply by
inches	centimeters	2.540	ounce-inches	newton-meters	.007062
feet	meters	.305	centimeters	inches	.394
yards	meters	.914	meters	feet	3.280
miles	kilometers	1.609	meters	yards	1.094
square inches	square centimeters	6.451	kilometers	miles	.621
square feet	square meters	.093	square centimeters	square inches	.155
square yards	square meters	.836	square meters	square feet	10.764
square miles	square kilometers	2.590	square meters	square yards	1.196
acres	square hectometers	.405	square kilometers	square miles	.386
cubic feet	cubic meters	.028	square hectometers	acres	2.471
cubic yards	cubic meters	.765	cubic meters	cubic feet	35.315
fluid ounces	milliliters	29.573	cubic meters	cubic yards	1.308
pints	liters	.473	milliliters	fluid ounces	.034
quarts	liters	.946	liters	pints	2.113
gallons	liters	3.785	liters	quarts	1.057
ounces	grams	28.349	liters	gallons	.264
pounds	kilograms	.454	grams	ounces	.035
short tons	metric tons	.907	kilograms	pounds	2.205
pound-feet	newton-meters	1.356	metric tons	short tons	1.102
pound-inches	newton-meters	.11296			

## Temperature (Exact)

°F	Fahrenheit	5/9 (after	Celsius	°C
	temperature	subtracting 32)	temperature	

